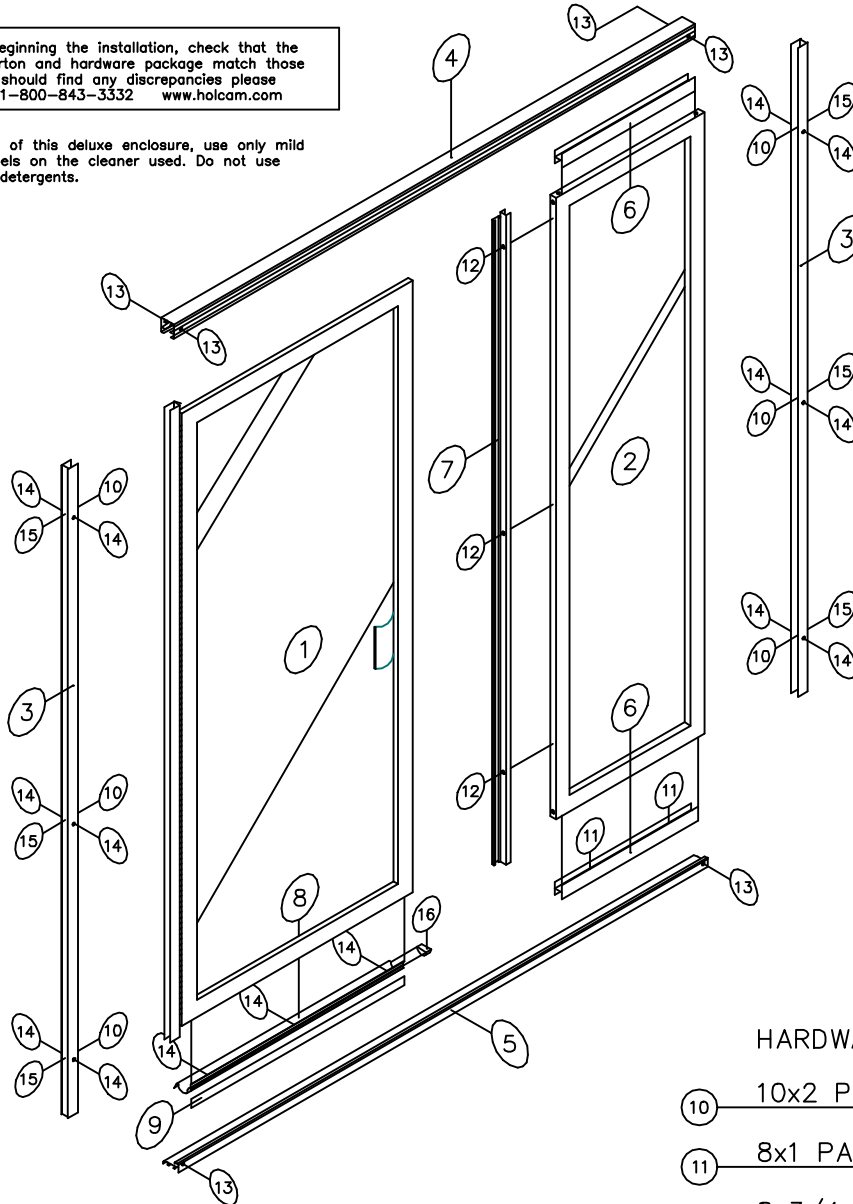


* PLEASE NOTE: Before beginning the installation, check that the parts contained in the carton and hardware package match those parts listed below. If you should find any discrepancies please contact Holcam Sales at 1-800-843-3332 www.holcam.com

WARNING:








To avoid damaging the finish of this deluxe enclosure, use only mild cleaners. Always read the labels on the cleaner used. Do not use harsh chemicals or abrasive detergents.

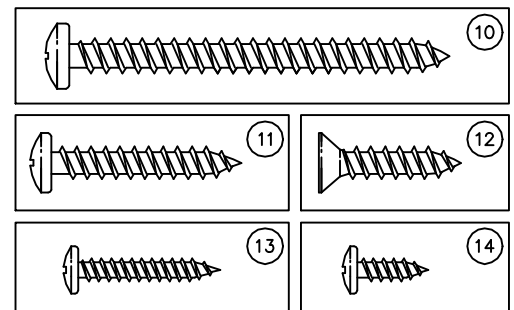


CAT#: PART LIST: LENGTH: QTY:

	1	DOOR ASSEMBLY		1
	2	PANEL ASSEMBLY		1
	3	H-36 WALL JAMB	70 1/4"	2
	4	H-55 HEADER		1
	5	H-25 THRESHOLD		1
	6	H-35 PANEL FILLER		2
	7	H-18 STRIKE JAMB	69 15/16"	1
	8	H-11 GUTTER		1
	9	V-8 GUTTER VINYL		1

HARDWARE PACK: QTY:

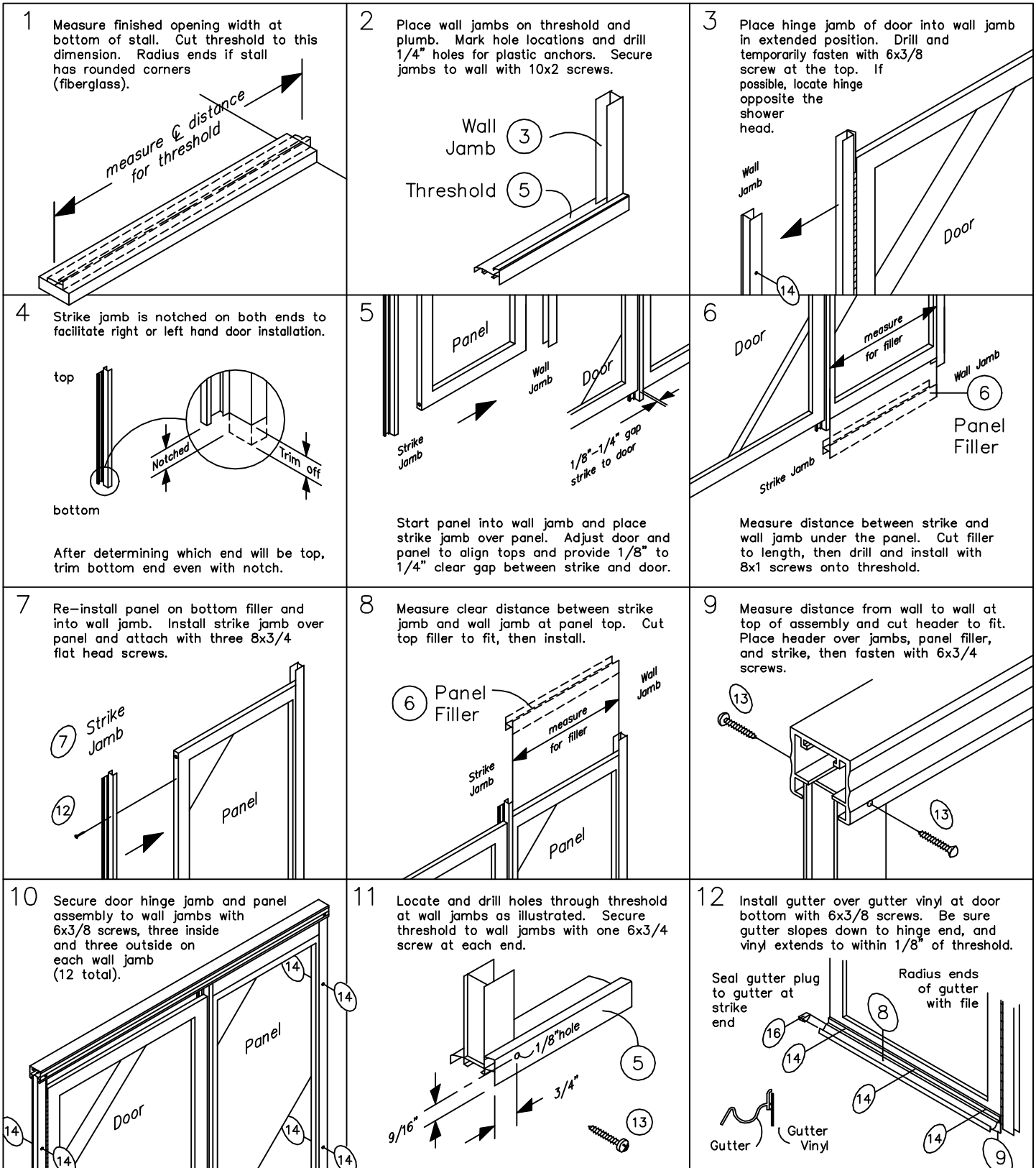
	10x2 PAN HEAD SCREW	6
	8x1 PAN HEAD SCREW	2
	8x3/4 FLAT HEAD SCREW	3
	6x3/4 PAN HEAD SCREW	6
	6x3/8 PAN HEAD SCREW	15
	PLASTIC ANCHOR	6
	GUTTER PLUG	1



**MODEL A-12
MAGNETIC STRIKE
DOOR & PANEL
WITH HEADER**

TOOLS REQUIRED FOR INSTALLATION OF MODEL A-12 DOOR & PANEL WITH HEADER:

1. Caulking gun + approved silicone sealant
2. Rubber mallet
3. Hacksaw
4. Philips screwdriver
5. Mill file to smooth cut edges or radius
6. 1/8" drill bit for 6x screws
7. 9/64" drill bit for 8x screws
8. 5/32" drill bit for 10x2 screws
9. 1/4" drill bit for plastic anchors
10. 1/4" carbide drill bit for tile anchors



NOTE: We recommend filing any sharp corners that may cause injury, then clean and run a continuous bead of sealant along the outside of threshold and up wall jambs. Do not caulk inside of the unit. Polarity of the magnet may be reversed. To change polarity, remove magnetic strip from strike jamb, turn end for end, and re-install.